

Illuminate rural and urban areas, streets, parks, squares, residential and pedestrian areas.

The luminaire **Arquicity S1** assumes an important role in the city's identity.

In order to provide an energy efficient solution and in a clear commitment to quality, **Arquicity S1** was developed based on a careful selection of materials, ensuring its performance and a long lifetime of all components.

The **Arquicity S1** is available in various power and photometries, adjusting to the specificities of each project, allowing to reduce the energy consumption and energy invoice.

PERFORMANCE

With a high quality polycarbonate polymer body and resistance to UV radiation and ignition, it also has an aluminum heatsink that allows excellent heat dissipation, maximizing the equipment's lifetime.

This luminaire has also an integrated thermal protection for overheating protection of its components.

SUSTAINABILITY

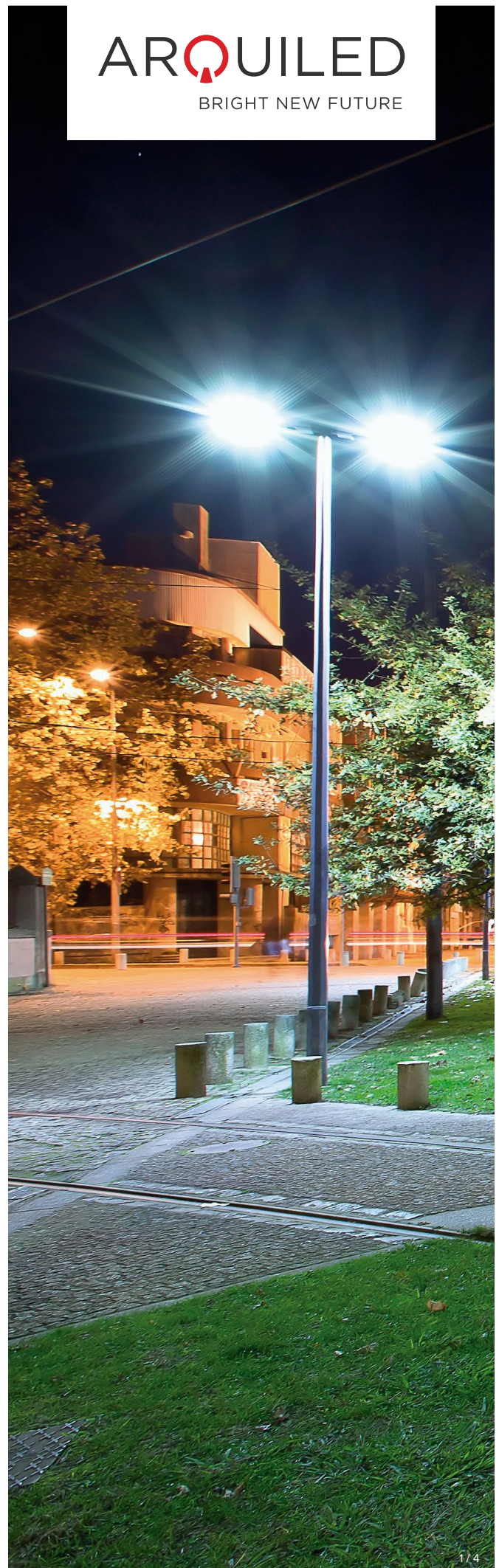
The excellent combination of quality vs money and its significant reduction of energy costs, plus its reduced maintenance costs, make **Arquicity S1** the right choice for those looking for a high performance and financially sustainable solution, with a fast return on investment.

APPLICATION AREAS

- Rural and urban areas
- Pedestrian areas, parks and squares
- Parking lots and outdoor areas

BENEFITS

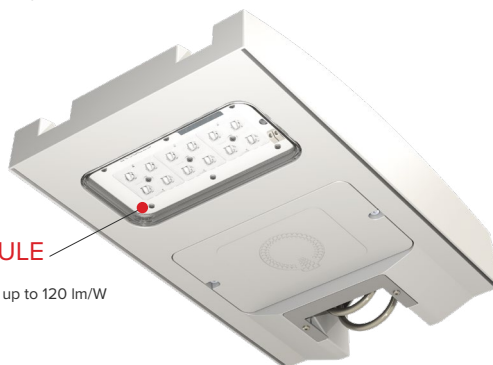
- Costs reduction
- Rural and urban areas enhancement
- Revitalizes the areas in the night period
- Increased public safety and crime prevention
- Improved perception and guidance on any type of road



ARQUICITY S1

PERFORMANCE

High quality polycarbonate polymer
UV protection



OPTICAL MODULE

Last generation LED
High luminous efficiency: up to 120 lm/W

up to
120 lm/W

luminous efficiency

up to
80%

energy efficiency

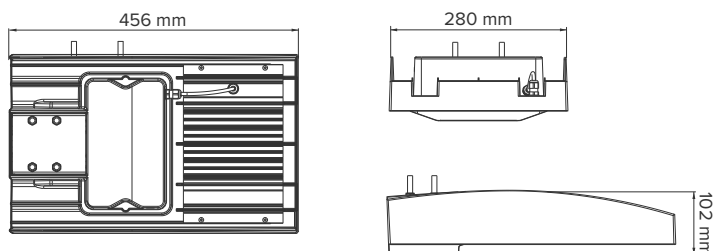
IP66

IK08

T_a
40°C

CLASS
II

DIMENSIONS



MODELS

Models	ARQUICITY S1: 10 20 30 40
Power Consumption⁽¹⁾	7 - 42 W (depending on configuration)
Luminous Flux⁽¹⁾	1.459 - 4.539 lm
Luminous Efficiency	Up to 120 lm/W

SPECIFICATIONS

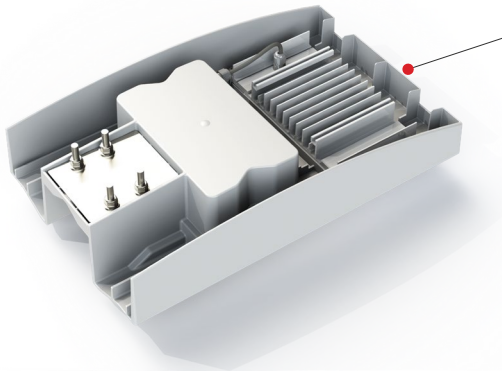
Housing	Polycarbonate polymer and stainless steel
Optical module	Diffuser: High impact PMMA Sink: Aluminium
Product finishing	Polyester painting
Product color	RAL 7035
Correlated Color Temperature (CCT)	3000K / 4000K*
Lumen maintenance at 100.000h	> 90% ⁽²⁾
Color Rendering Index (CRI)	≥ 70
Ingress protection (IEC – EN 60598)	IP66
Mechanical impacts protection (IEC – EN 62262)	IK08
Nominal voltage	100 - 240 V / 50 - 60 Hz
Surge overvoltage protection (EN 61000-4-5)	4 kV / 10 kV
Electrical class	Class II
Mounting	Horizontal (standard) Vertical (optional)
Inside mounting diameter	ø 42 - 60 mm
Angle correction (optional)	+5°, -5°, -10°, -15°, -20°

⁽¹⁾ The initial flux and power consumption of the luminaire are indicative values and valid for @t_j=25°C. The real flux output of the luminaire depends on specific conditions, such as temperature and may vary with specific configurations. The values are subject to tolerances in technology.

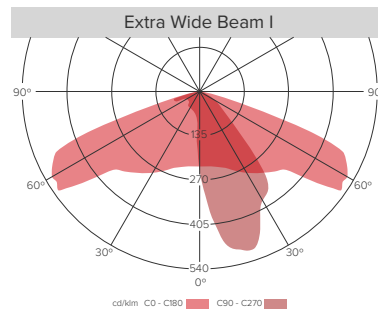
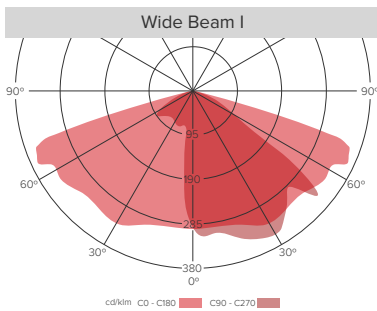
⁽²⁾ In accordance with IES LM-80 - TM-21.

* Other options available on request.

ARQUICITY S1



SINK
Aluminum sink
Excellent heat dissipation



Note: Other options available on request.

LIGHTING CONTROL AND DIMMING

Arquiled offers a range of lighting control systems that are adaptable and scalable to the different needs of street lighting projects.

Each system is designed according to the infrastructure needs of municipalities and can include solutions integrated into the luminaires or external devices (Plug n' Play type) that can be easily attached to the luminaires.

ECCOS single advanced

Integrated control in the luminaire to dimm light, through smart controllers with factory-programmed energy-saving profiles.

2025, ARQUILED - PROJECTOS DE ILUMINAÇÃO, SA.
All rights reserved. All trademarks are acknowledged.
ECCOS brand is a trademark user under licence of Bright Science Ltd.
Specifications valid except for omission or typographical error, subject to change without notice.
The images presented are for illustrative purposes and may differ from the final product.



OPTICAL DATA

IoT CONNECTIVITY SOLUTIONS



